



Violence Against Women and Girls

Haringey's 10 year Strategy



TOTAL POLICING

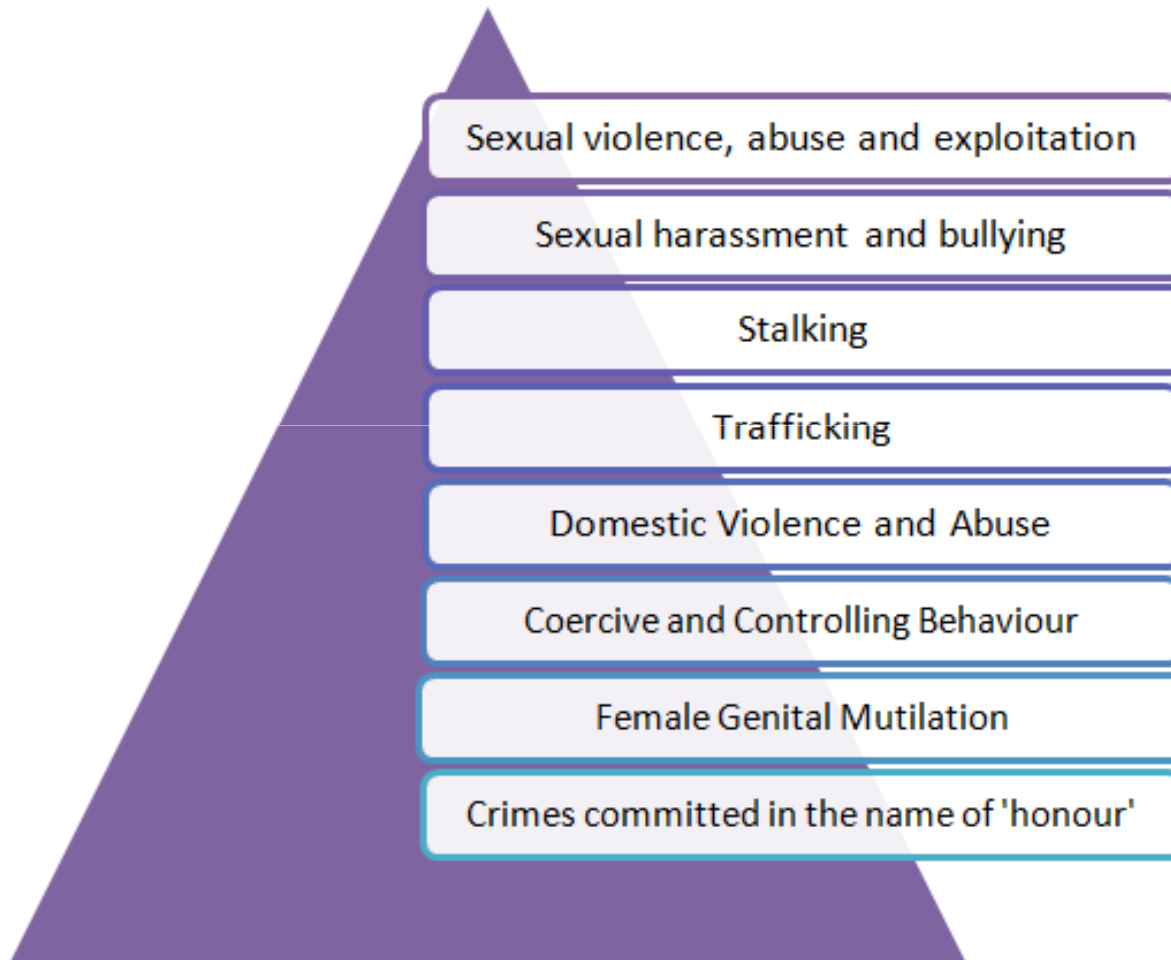


What is Violence Against Women and Girls?

Violence against Women and Girls (VAWG) is both a form of discrimination and a violation of human rights.

- *'Any act of gender based violence that results in or is likely to result in physical, sexual or psychological harm or suffering to women [or girls], including threats of such acts, coercion or arbitrary deprivation of liberty'* (1993, Article 1)

The Forms of Violence Against Women and Girls



Our vision over the next 10 years is to improve the safety, health and wellbeing of women and girls in the borough so they can live to their full potentials and for Haringey to become a borough in which no form of abuse is tolerated.



What do we know about VAWG in Haringey?

It's very difficult to get detailed information on how many women and girls are affected each year as VAWG is underreported and many victim/survivors do not come to the attention of services. But, we do know that...



5th highest in London – 2787 incidents from April 2015-March 2016



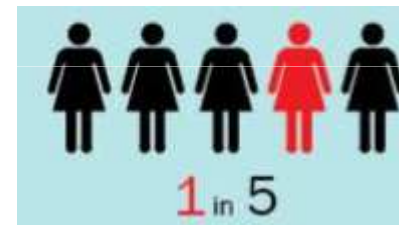
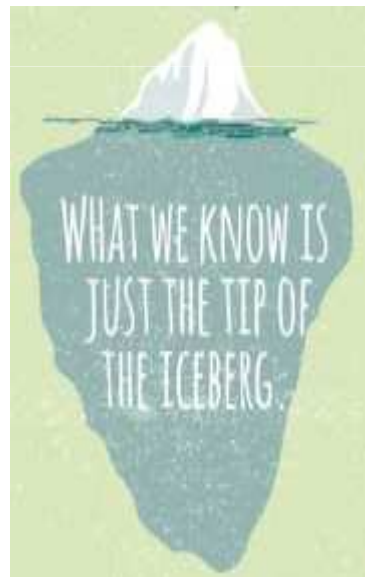
Up to 80% of all contacts to CYPs involve domestic abuse

sexism
SEE IT. SAY IT. STOP IT.

100,000 submissions to Everyday Sexism Campaign



An estimated 3500 women are affected by FGM and 115 reported between April 2015-March 2016



592 sexual assaults were reported between April 2015 and March 2016



High but hidden levels of forced marriage and so-called 'honour' based violence

More than 1 in 5 experience stalking. This means that 5000 women in Haringey have experienced it.



The consultation

- 10 week consultation
- 55 responses to online and paper consultation
- 53 took part in focus groups
- Over 200 in our professional and local networks
- Broad support for our approach
- Focus groups with survivors, professionals and young people allowed for nuanced insight and identify barriers and gaps

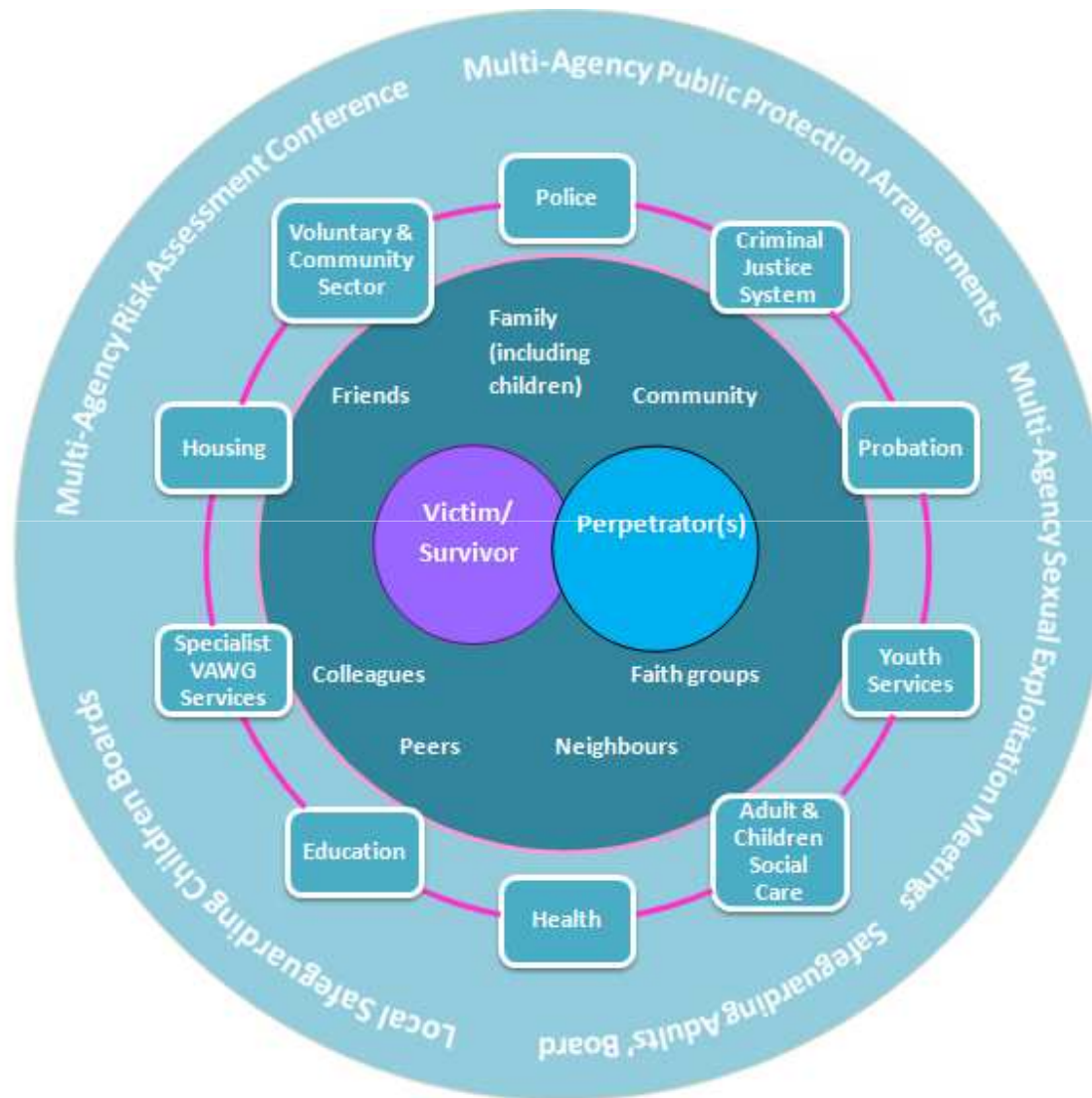
Key Element

The key element identified by all respondents was the crucial need for **all agencies** across to work closely with **local residents** and with **survivors of abuse** to design an approach that works across Haringey that develops a coordinated community response.

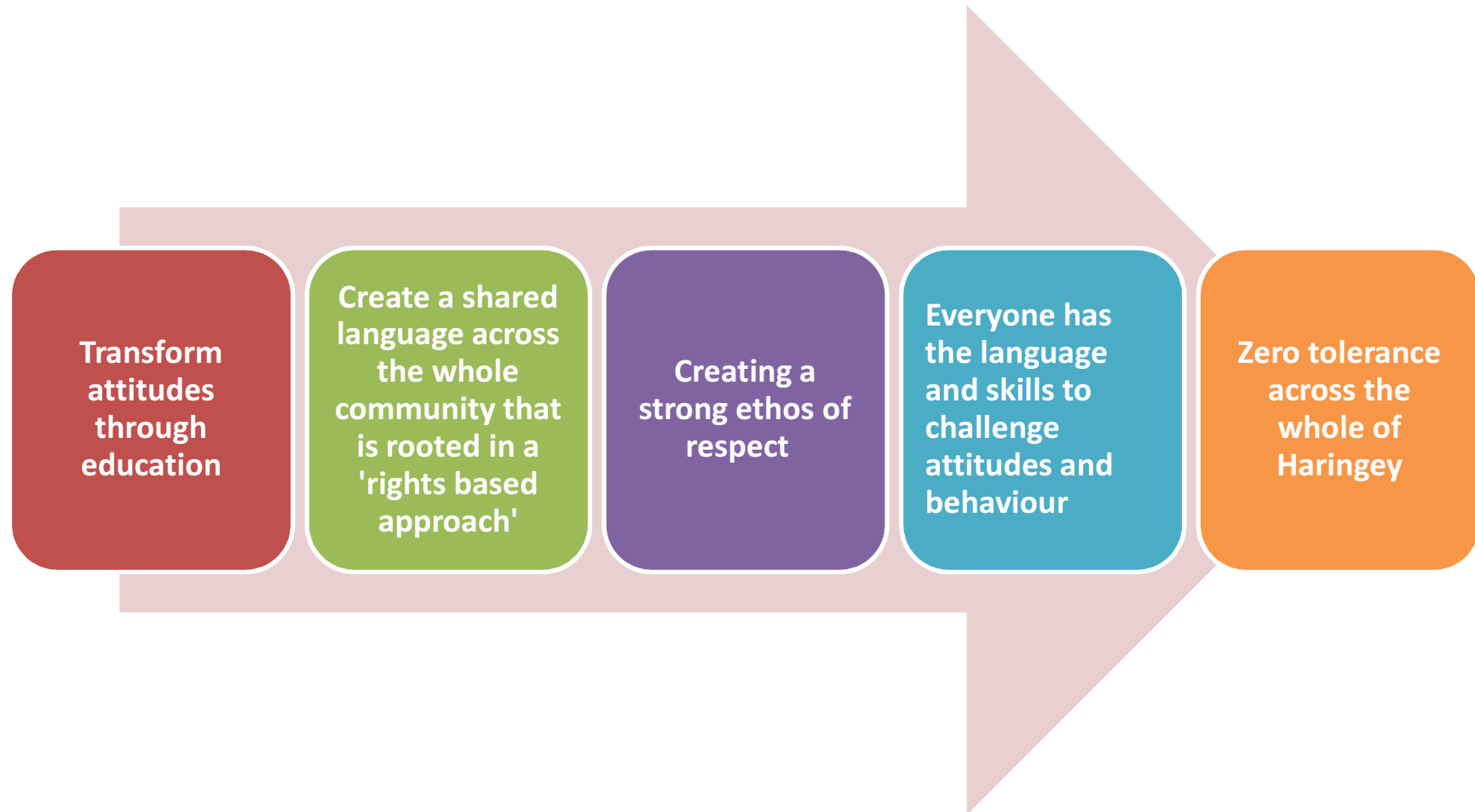
What are the Priorities?



Priority 1: Coordinated community response



Priority 2: Prevention



Priority 3: Support Victim/Survivors

High quality risk and needs assessments

Wrap-around support for victim/survivors and their families

Individualised, trauma-informed services

All professionals and victim/survivors know how to access support to signposting.

Women have a choice of specialist support services, designed with real survivor input,

All organisations trained to ask the right questions and respond appropriately.

Priority 4: Holding Perpetrators to Account

